

Water Tank Truck

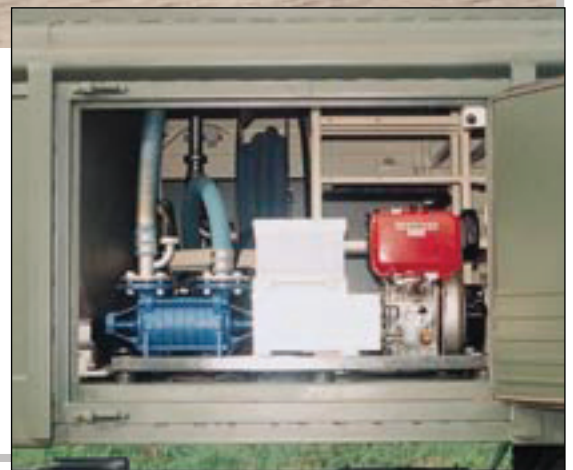
CITRA-M

Special vehicle for transporting, supplying, pumping-in and off drinking water in field conditions and for short time storing of the water.



Meets:

- the applicable requirements for international road transport as well as safety and environment legislation requirements on utilisation of vehicles on public roads
- the compactibility requirements towards mobile and/or stationary tool to transport, store and distribute drinking water, in force in the Czech Army as well as in the NATO member states armies.

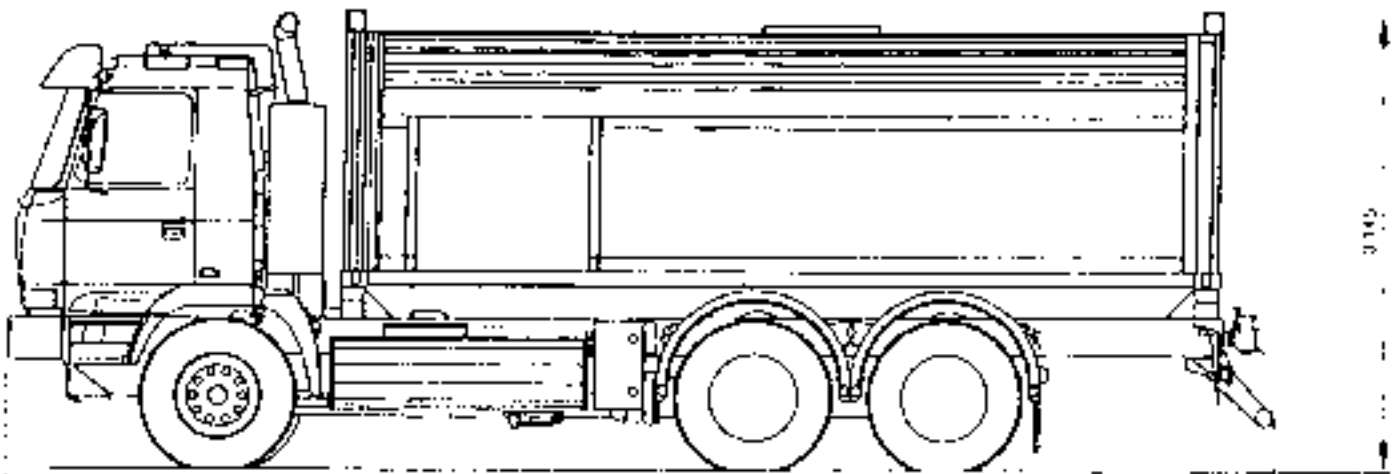


Water Tank Truck CITRA - M

Water tank truck CITRA-M has been designed for transporting, supplying, pumping - in and off drinking water in field conditions. It can be used also for short time storing of the water. CITRA-M meets the applicable requirements for international road transport as well as safety and environment legislation requirements on utilisation of vehicles on public roads. It also meets the compatibility requirements towards mobile and/or stationary tool to transport, store and distribute drinking water, in force in the Czech Army as well as in the NATO member states armies.

Basic tasks:

- Filling the container tank by drinking water from an outside pressurised outlet
- Filling the container tank by drinking water through its own pump
- Filling the container tank by drinking water through the top neck
- Delivering drinking water from its own tank through the delivery hose
- Delivering drinking water from an outside outlet through its own pump
- Delivering drinking water by self-discharging its own tank
- Filling the cans of the container equipment by drinking water from its own tank
- Mud discharging of the tank and tubing
- Filtering the air entering the tank during water delivery
- Autonomous heating of the inner room in winter



8 790

Basic data:

- Undercarriage TATRA T 815 -280R25 28 270 6x6.2/371 TERRNo1
- Superstructure container case with ground plane dimensions acc.,to ISO-1C 6 058 x 2 438 x1 735 mm
- One-chamber tank made of stainless steel, capacity 7 000 l
- Flow rate at delivery 216 l/min
- Filtration/air-intake system
- Output of the diesel engine driving the pumps 7,35 kW at 1 800 r.p.m.
- Vehicle engine output 270 kW at 1 800 r.p.m.
- Vehicle maximum velocity 85 km/h
- Gearbox mechanical, 10 speed
- Brakes ABS + retarder
- Suspension - torsion bars and telescopic shock absorbers in the front
- air bellows + springs + telescopic schock absorbers in the rear